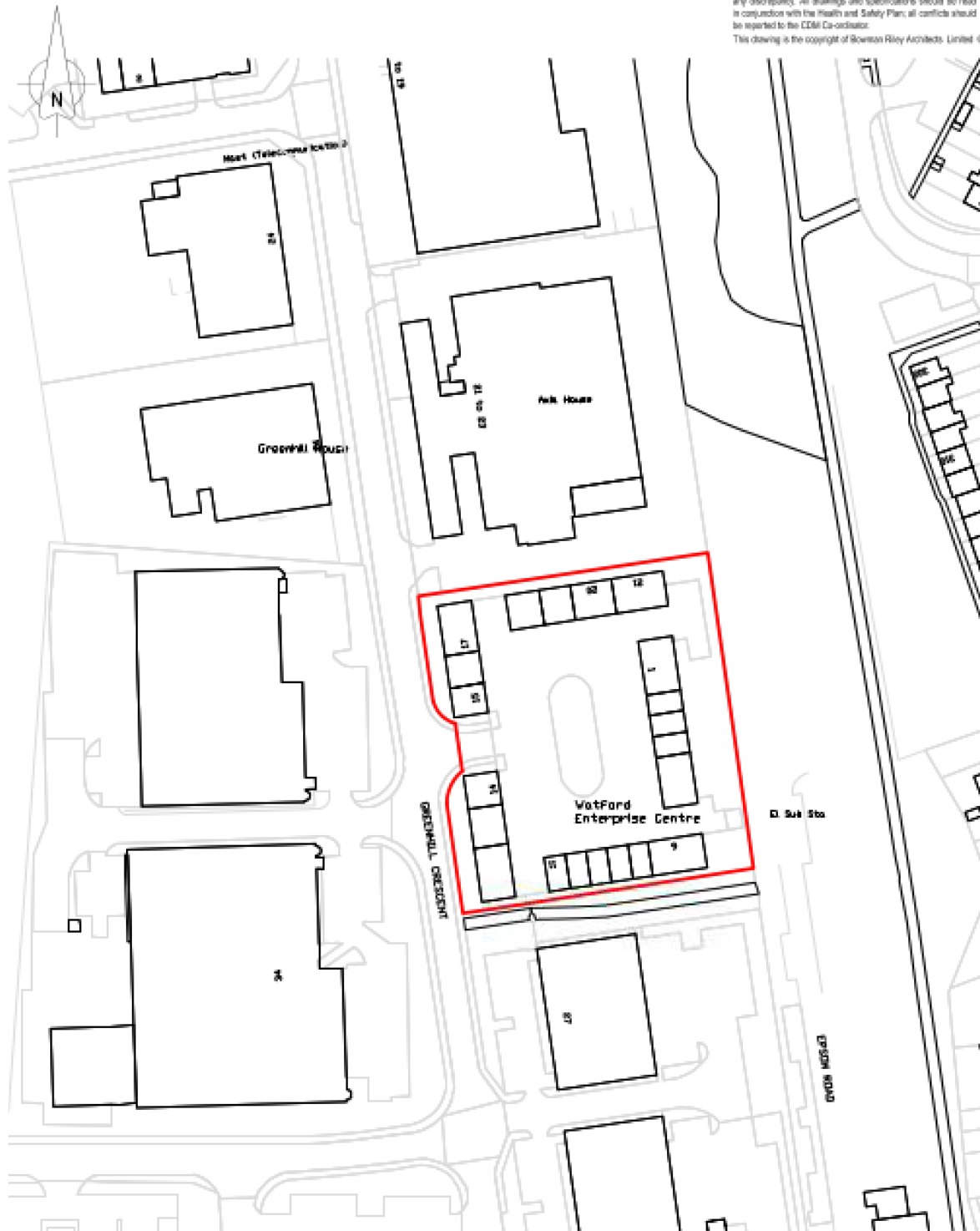


Site Location Plan

no dimensions to be relied on and are for information only. All drawings and specifications should be read in conjunction with the Health and Safety Plan; all conflicts should be reported to the CDM Co-ordinator. This drawing is the copyright of Bowman Riley Architects, Limited ©

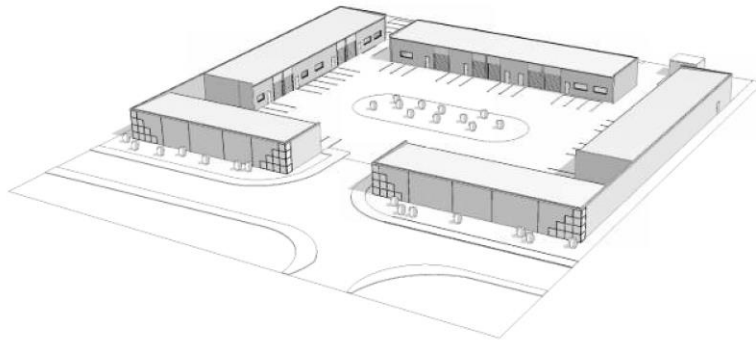


NOMAD PROPERTIES LTD

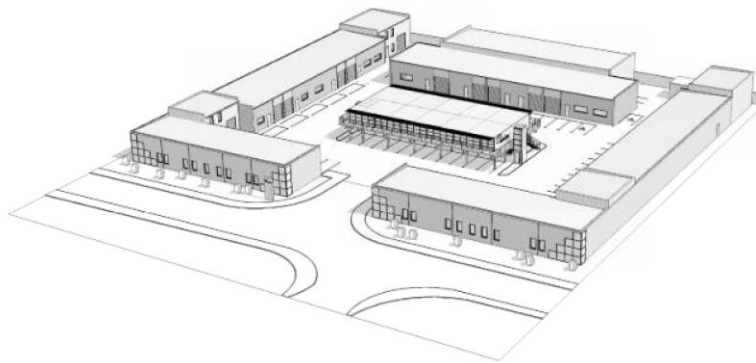
SITE LOCATION PLAN

revision		date	by
drawn by	checked by	date	scale @ A4
AS	TP	27/07/18	1:1250
project number	drawing number	revision	
8142	(000) 001		

Perspective Views



EXISTING



PROPOSED

Construction staff and operatives must ensure the principal contractor has provided thorough and accurate information on all health and safety aspects relating to the design identified on this drawing prior to the issue of Construction phase risk assessments.

The construction information The designers note that the following health and safety risk relating to this drawing have not been eliminated during the design process:

ref	residual risk

K	Units 20 and 21 merged	23/04/19	AS	TP
J	Unit 19 updated as per clients comments	09/04/19	AS	TP
I	Updated to Transport Requirements	02/04/19	AS	TP
H	Design updated	17/12/18	AS	TP
G	Structural and feature colour updated, container units updated, platform lift added	02/11/18	AS	TP
F	Access to Area updated, 4.0m gap opening	23/10/18	AS	TP
E	Structural notes, site drainage added, structure updated, container doors and side windows added	19/10/18	AS	TP
D	Plans updated following planning	15/10/18	AS	TP
C	Plans submitted following clients comments	05/10/18	AS	TP
B	Plans submitted following clients comments	15/10/18	AS	TP
A	Plans updated following transport planning comments	26/07/18	AS	TP
	Expansion added	AS	TP	
	revision	date	by	CPK

All dimensions to be verified on site, and the Architect informed of any discrepancies. All drawings and specifications should be read in conjunction with the Health and Safety Plan. All conflicts should be reported to the CDM Co-ordinator.

This drawing is the copyright of Bowmar Riley Architects Limited. ©

DO NOT SCALE THIS DRAWING

- preliminary
- planning
- comment
- tender
- construction
- record

BOWMAR RILEY
ARCHITECTS

3rd Floor 2 Spinnakers Drive London EC1Y 0SF 0203 7286800
LEEDS | LONDON | BOSTON www.bowmarriley.com

NOMAD PROPERTIES LTD			
drawn by	checked by	date	scale @ A3
AS	TP	07/03/18	
EVOLVE GREENHILL CRESCENT, WATFORD			
PERSPECTIVE VIEWS			
project number	drawing number	revision	
8142	(000) 010	K	

file reference: L:\B142 - Evolve, Watford\B142 - 07 Revise\B142 - Evolve Watford April19.rvt



Construction staff and operatives must ensure the principal contractor has provided thorough and accurate information on all health and safety aspects relating to the design identified on this drawing prior to the issue of Construction phase risk assessments.

The construction information The designers note that the following health and safety risk relating to this drawing have not been eliminated during the design process:

All dimensions to be verified on site, and the Architect informed of any discrepancies. All drawings and specifications should be read in conjunction with the Health and Safety Plan. All conflicts should be reported to the CDM Co-ordinator.

This drawing is the copyright of Bowmar Riley Architects Limited. ©

DO NOT SCALE THIS DRAWING

- preliminary
- planning
- comment
- tender
- construction
- record

BOWMAR RILEY
ARCHITECTS

3rd Floor 2 Spinnakers Drive London EC1Y 0SF 0203 7286800
LEEDS | LONDON | BOSTON www.bowmarriley.com

revision	date	by	CPK
AS	TP	04/16/19	

EVOLVE GREENHILL CRESCENT, WATFORD

PROPOSED 3D VIEW 2			
project number	drawing number	revision	
8142	(000) 012		

file reference: L:\B142 - Evolve, Watford\B142 - 07 Revise\B142 - Evolve Watford April19.rvt



Construction staff and operators must ensure the principal contractor has provided thorough and accurate information on all health and safety aspects relating to the design contained in this drawing, including the review of:

- Design construction risk assessments
- Method statements
- Plans to work
- The construction information

The designers note that the following health and safety risk relating to this drawing have not been eliminated during the design process:

All dimensions to be verified on site, and the Architect informed of any changes. All drawings and specifications should be read in conjunction with the Health and Safety Plan; all work items should be reported to the CDM Co-ordinator.

This drawing is the copyright of Bowman Riley Architects Limited. ©

(DO NOT SCALE THIS DRAWING)

preliminary comment construction
 planning tender record

revision	date	by
AS	TP	04/16/19

EVOLVE
GREENHILL CRESCENT,
WATFORD

BOWMAN RILEY
ARCHITECTS

2nd Floor | 2 Spinkers Street | London | EC1Y 8SP | 0203 728600
LEEDS | LONDON | SKIPTON | www.bowmanriley.com

PROPOSED 3D VIEW 4

project number	drawing number	revision
8142	(000) 014	

No reference: L:\0142 - Evolve, Watford\0142 - 07 Revise\0142 - Evolve Watford April19 2.rvt



Construction staff and operators must ensure the principal contractor has provided thorough and accurate information on all health and safety aspects relating to the design contained in this drawing, including the review of:

- Design construction risk assessments
- Method statements
- Plans to work
- The construction information

The designers note that the following health and safety risk relating to this drawing have not been eliminated during the design process:

All dimensions to be verified on site, and the Architect informed of any changes. All drawings and specifications should be read in conjunction with the Health and Safety Plan; all work items should be reported to the CDM Co-ordinator.

This drawing is the copyright of Bowman Riley Architects Limited. ©

(DO NOT SCALE THIS DRAWING)

preliminary comment construction
 planning tender record

revision	date	by
AS	TP	04/16/19

EVOLVE
GREENHILL CRESCENT,
WATFORD

BOWMAN RILEY
ARCHITECTS

2nd Floor | 2 Spinkers Street | London | EC1Y 8SP | 0203 728600
LEEDS | LONDON | SKIPTON | www.bowmanriley.com

PROPOSED 3D VIEW 5

project number	drawing number	revision
8142	(000) 015	

No reference: L:\0142 - Evolve, Watford\0142 - 07 Revise\0142 - Evolve Watford April19 2.rvt



Construction staff and operators must ensure the principal contractor has provided thorough and accurate risk assessment of all construction safety aspects relating to the design identified on this drawing, including the review of:

- Design and construction risk assessments
- Method statement
- Permit to work
- The construction information

The designers take full responsibility for the health and safety risk relating to the drawings and have not been indemnified during the design process.

All dimensions to be verified on site, and the Architect informed of any changes. All changes and specifications should be noted in conjunction with the Health and Safety File, all certificates should be retained by the CDM Coordinator.

This drawing is the copyright of Bowman Riley Architects Limited. ©

DO NOT SCALE THIS DRAWING.

preliminary comment construction
 planning tender record

A - Lines 20 and 21 merged		25/04/19	AS	TP
revision	099	by	098	
drawn by	checked by	date	scale @	A3
AS	TP	23/04/19		
EVOLVE GREENHILL CRESCENT, WATFORD				

BOWMAN RILEY
ARCHITECTS

2nd Floor - 2 Sycamore Street - London - EC1Y 0SF - 0203 728650
 10509 - LONDON - SHIPTON - www.bowmanriley.co.uk

PROPOSED 3D VIEW 11		
project number	drawing number	revision
8142	(000) 021	A

File reference: L:\19142 - Evolve, Watford\8142 - 07 Rev\8142 - Evolve Watford April19 3.rvt